

3DAYS 2NIGHTS PHUKET (Tour Code: 3D2NHKTBLUE)

DAY 01 ARRIVAL PHUKET

Arrival Phuket, pick up and assist by tour guide to check in hotel. Enjoy using hotel facilities - swimming, discover Patong Beach - challenge with bargaining prices at Patong Beach.

Day 02 PHUKET (BL)

Private Phuket Sightseeing - City Tours with Lunch. 0700 - 0945hrs - breakfast at hotel - relax and spend hotel facilities - walk along Patong Beach or window shopping at Patong area.

1000hrs - Tour guide will pick up for private sightseeing at Karon Beach - Kata Beach then to Karon View Point - Laem Phromthep Cape for panoramic view of the beautiful scenery of Andaman Sea. Visit shooting range / kinnaree elephant camp for elephant trekking. Exciting by sitting on the back of elephant while walking along the jungle. Shooting with the real bullet. Visit Chalong Temple, one of the oldest temple in Phuket. Cashew nut before having good lunch at local restaurant. Enjoy Thai food menu special tomyam seafood, fish with chili sauce also local tip paste with fresh vegetable. Afternoon city tours - sightseeing historical buildings with chino Portuges style. Shopping before transfer to hotel.

DAY 3 DEPARTURE PHUKET (B)

Breakfast at hotel. Free at own leisure until transfer to airport for departure flight.

Remark : Shooting Range / Elephant trekking tickets will be own expenses - exclude from packages



PACKAGE PRICE MYR PER PERSON MIN 02 PERSON
VALID JAN 2011 - APR 2011

Hotel Class or similar	Single	Twin	Triple	CWB	CNB
Aloha Hotel	550	360	360	290	235
Extension night per room	210			90	-
Club Andaman Beach Resort	798	495	495	395	320
Extension night per room	330			90	-
Patong Resort Hotel	755	465	465	370	300
Extension night per room	315			110	
Royal Paradise	820	500	500	400	325
Extension night per room	360			90	-

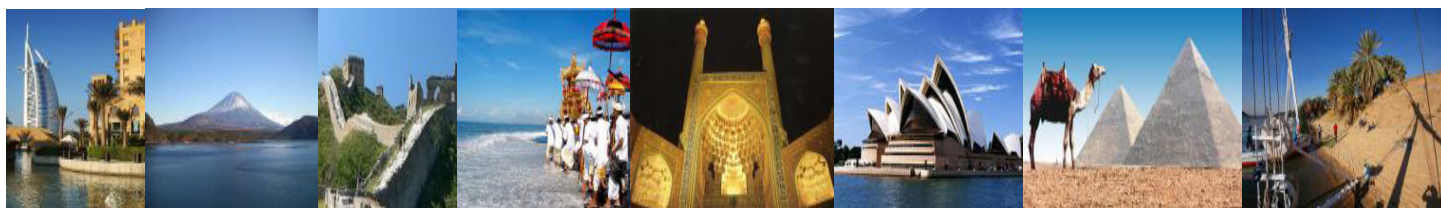
*PACKAGE PRICE SUBJECT TO CHANGE WITH OR WITHOUT PRIOR NOTICE

INCLUDES:

- Fare based in MYR Per Person with min 02 person
- Return airport transfers (SIC)
- Accommodation
- Hotel daily breakfast
- Tours & sightseeing as per itinerary (SIC)
- Meals as per itinerary

EXCLUDES:

- Return International Airfare, Domestic Airfare
- Airport taxes and Fuel Surcharge
- Passport & Visa fees
- Laundry, phone calls, beverages, meals not detailed in itinerary
- Tips to motor-coach drivers and local city guides
- Items of personal nature
- Excess baggage
- Optional excursions
- Any peak season surcharge
- Travel Insurance



KOPETRO TRAVEL & TOURS SDN BHD (KKKP:0233)

B-0-5, MEGAN AVENUE II, 12 JALAN YAP KWAN SENG, 50450 KUALA LUMPUR

T : 03 2164 1577 F : 03 2164 6307 E : tours@kopetro.com.my W : www.kopetrotravel.com