

SRI LANKA

6D5N SRI LANKA KATARAGAMAN (TOUR CODE : I0605SLKJW)



D1 KUL-COLOMBO AIRPORT-KANDY (MOB)

Arrive in Sri Lanka. You will be met by representatives of Jetwing Travels and transferred to Kandy. After breakfast proceed to Kandy. En route visit a ***Spice Garden in Matale** to see the different spices, which Sri Lanka is famous for. You will be introduced to different spices and shown how some of these spices are grown and processed. On arrival city tour of Kandy, including Upper Lake Drive, Market Square, Arts & Crafts Centre, Gem Museum. ***Kandy** - the hill capital, venue of the annual Perahera. The last stronghold of the Sinhala Kings was finally ceded to the British in 1815. Kandy is an example of the Buddhism's influence in Sri Lanka today. Temple's shrines and monasteries keeping alive Buddhist traditions are everywhere. Visit ***Temple of the Sacred Tooth Relic** - ever since 4th Century A.D, when the Buddha's Tooth was brought to Sri Lanka hidden from sacrilegious hands in an Orissan princess' hair, the Relic has grown in repute and holiness in Sri Lanka and throughout the Buddhist world. It is considered Sri Lanka's most prized possession. Witness a cultural show featuring various dance groups of Sri Lanka. **Overnight stay at Hotel Topaz, Kandy - 3***

D2 KANDY - NUWARA ELIYA (B)

After breakfast proceed to Nuwara Eliya. En route visit Tea Plantation & Tea Factory. ***Tea Factory & *Tea Plantation** - Tea was first planted in Sri Lanka in 1824 at the Botanical Gardens at Peradeniya, when a few plants were brought from China. More were introduced from Assam in 1839. In 1867 a Scottish Planter named James Taylor planted tea seedlings on an 8 hectares of forest land, in the Loolcondura Estate. ***Nuwara Eliya** - The 'Little England' of Sri Lanka, is set against beautiful backdrops of Mountains, Valleys, Waterfalls and Tea Plantations. It is supposed to be one of the coolest places in the Island, but it is really just like an English spring day, although the temperature does drop at night. All around Nuwara Eliya you will see evidence of the British influence, houses like country cottages or Queen Ann style mansions. Visit ***Seetha Eliya Kovil** - 7kms on the Nuwara Eliya - Bandarawela road, bordering the Hakkgala Strict Nature Reserve is the area called Seetha Eliya, where a quaint little devala is found by the side of the road at a slightly lower elevation by a stream. Transferred to Hotel. **Overnight stay at Jetwing St Andrew's Hotel, Nuwara Eliya - DLX Colonial.**

D3 NUWARA ELIYA - KATARAGAMA (B)

After breakfast proceed to Kataragama. Evening attend the 'Pooja Ceremony'. ***Kataragama** - Kataragama is a place of worship not only for Hindus, but for Buddhists, Muslims and some Christians as well. Kataragama Devala is situated by the Menik Ganga (river). Still, the major part of devotees who actively participate in the Kataragama Festival are Hindus, as the proceeding honour Skanda (also known as Murugan), the deity of Kataragama. Transferred to Hotel. **Overnight stay at Priyankara Hotel, Kataragama**

D4 KATARAGAMA-BERUWELA (B)

After breakfast proceed to Beruwela. En route visit ***Galle** - Sri Lanka's most historically interesting town is Galle. It was a major port until about 100 years, but today still handles shipping and sailing boats in the natural harbour. Stroll around the lighthouse and harbour or visit the old town where you can see the traditional lace makers and wood carvers and purchase some the finest souvenirs. ***The Dutch Fort** - The South Coast's major city is Galle, whose oldest landmark is the massive Portuguese and Dutch Fort which is a "World Heritage Site" in which the central city is contained. But the city may be much older. Some scholars believe it to be the "Tarshish" of the Old Testament, to which King Solomon sent his merchant vessels, and to which Jonah fled from the Lord. Continue & relax. **Overnight stay at Jetwing Tropical Villa, Beruwela.**

D5 BERUWELA-COLOMBO (B)

After breakfast proceed to Colombo. In Colombo commence city tour ***Colombo** - a drive through the city taking you to the busy commercial areas as well as the tree-lined residential, Cinnamon Gardens. Visit Fort, the former British administrative center and military garrison, Sea Street - the Goldsmith's quarters in the heart of Pettah, the Bazaar area, where is also a Hindu Temple with elaborate stone carvings, and the Dutch Church of Wolfendhal dating back to 1749. Also visit the BMICH, see the replica of Avukana Buddha & the Independence Square. ***Shopping** in Colombo.....visit ***ODEL** Unlimited provides ample opportunity indulge, not only in shopping for designer wear apparel for the whole family, but also take taste buds on a voyage of discovery. Transferred to Hotel. **Overnight stay at Pegasus Reef Hotel, Colombo - 4***

D6 COLOMBO-AIRPORT (B)

Packed breakfast transferred to the airport for the flight back.

HOTEL	NO. OF PAX	SINGLE	TWIN / TRIPLE	CHILD WITH BED	CHILD NO BED
SEPTEMBER 2010 - OCTOBER 2010					
4D3N SRI LANKA DELIGHT	02-03	1482	1164	717	501
	04-06	1224	906	568	398
NOVEMBER 2010 - APRIL 2011					
4D3N SRI LANKA DELIGHT	02-03	1753	1351	828	576
	04-06	1495	1093	679	473
Peak Period Supplements :-					
<i>Sigiriya Village Hotel, Sigiriya</i>					
15/12/10 - 15/01/11 - MYR 40 per person					
<i>Hotel Topaz, Kandy</i>					
21/12/10 - 05/01/11 - MYR 40 per person					
06/01/11 - 30/04/11 - MYR 20 per person					
<i>Jetwing St Andrew's Hotel & Pegasus Reef Hotel</i>					
20/12/10 - 10/01/11 - MYR 40 per person per hotel					

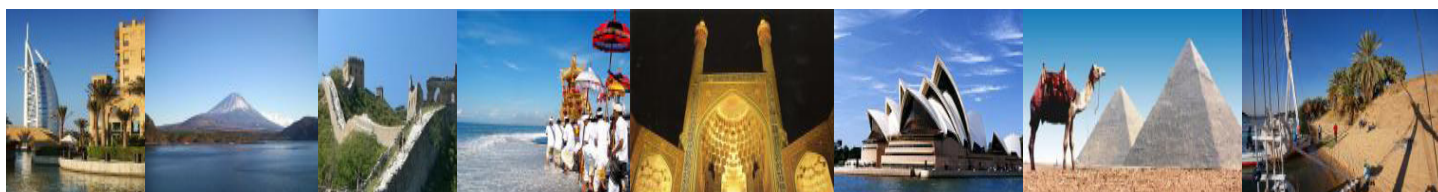
INCLUDES:

- Accommodation as per the itinerary
- Meals as per itinerary
- Transportation in an a/c vehicle
- Services of an English-speaking chauffeur guide up to 6 pax & English / Chinese Speaking National Tour Guide for 7 & above Pax.
- Entrance fee for the tourist Sights mentioned in the itinerary

EXCLUDES:

- Return International Airfare, Domestic Airfare
- Airport taxes and Fuel Surcharge
- Monument/camera fee @ monuments MYR 160
- Passport
- Any Visa fee if any
- Any item of personal nature such as table drinks, laundry, telephone calls ,mineral water
- Tips to motor-coach drivers and local city guides
- Items of personal nature
- Excess baggage
- Optional excursions
- Any peak season surcharge
- Any compulsory Gala Dinner
- Travel Insurance

Hotel	X'mas Eve Gala Dinner 24/12/2010	New Year Eve Gala Dinner 31/12/2010
Sigiriya Village Hotel, Sigiriya	235/- p.p.	235/- p.p.
Hotel Topaz, Kandy	180/- p.p.	180/- p.p.
Jetwing St Andrews, Nuwara Eliya	145/- p.p.	200/- p.p.
Pegasus Reef Hotel	145/- p.p.	180/- p.p.
Priyankara Hotel	130/- p.p.	145/- p.p.
Jetwing Tropical Villa	130/- p.p.	145/- p.p.



(KKKP:0233), B-0-5, Megan Avenue II, No.12 Jalan Yap Kwan Seng, 50450 Kuala Lumpur

T : 03 2164 1577 F : 03 2164 6307 E : tours@kopetro.com.my W : www.kopetrotravel.com