

# SRI LANKA

5D4N SRI LANKA HIGHLANDS (TOUR CODE : I0504SLHJW)



## D1 KUL-COLOMBO AIRPORT-KANDY (LD)

Arrive in Sri Lanka. You will be met by representatives of Jetwing Travels and transferred to Kandy. After breakfast proceed to Kandy. Lunch at Senani Restaurant. En route visit a \*Spice Garden in Matale to see the different spices, which Sri Lanka is famous for. You will be introduced to different spices and shown how some of these spices are grown and processed. On arrival city tour of Kandy, including Upper Lake Drive, Market Square, Arts & Crafts Centre, Gem Museum. \*Kandy - the hill capital, venue of the annual Perahera. The last stronghold of the Sinhala Kings was finally ceded to the British in 1815. Kandy is an example of the Buddhism's influence in Sri Lanka today. Temple's shrines and monasteries keeping alive Buddhist traditions are everywhere. Visit \*Temple of the Sacred Tooth Relic - ever since 4th Century A.D, when the Buddha's Tooth was brought to Sri Lanka hidden from sacrilegious hands in an Orissan princess' hair, the Relic has grown in repute and holiness in Sri Lanka and throughout the Buddhist world. It is considered Sri Lanka's most prized possession. Witness a cultural show featuring various dance groups of Sri Lanka. Dinner & Overnight stay at Hotel Topaz, Kandy - 3\*

## D2 KANDY - NUWARA ELIYA (BLD)

After breakfast proceed to Nuwara Eliya. Lunch at Blue Field Restaurant. En route visit Tea Plantation & Tea Factory. \*Tea Factory & \*Tea Plantation - Tea was first planted in Sri Lanka in 1824 at the Botanical Gardens at Peradeniya, when a few plants were brought from China. More were introduced from Assam in 1839. In 1867 a Scottish Planter named James Taylor planted tea seedlings on an 8 hectares of forest land, in the Loolcondura Estate. In 1873, the tea export industry of Sri Lanka began with a modest 23lbs being shipped to London. Tea will grow well only on rolling terrain and is classified by elevation into low grown, medium grown, high grown, into 3 main groups. In 1996 Sri Lanka has produced 258 million kgs. of tea and has earned Rs. 34,068 million by exporting 244 million kgs. of tea. Afternoon proceed to Nuwara Eliya & enjoy the scenic beauty of hill country

\*Nuwara Eliya - The 'Little England' of Sri Lanka, is set against beautiful backdrops of Mountains, Valleys, Waterfalls and Tea Plantations. It is supposed to be one of the coolest places in the island, but it is really just like an English spring day, although the temperature does drop at night. All around Nuwara Eliya you will see evidence of the British influence, houses like country cottages or Queen Ann style mansions. The Victoria Park, in the middle of the town, is a lovely place for a stroll or a picnic and is also good for Birding as you get some rare birds in this Park. Seasons may be absent elsewhere in Sri Lanka, but here you can read them by the flowers, which bloom in the spring (march to May) and the fall (August and September). These are the "seasons" when low-country folk flock to Nuwara Eliya to escape the sea level heat and humidity. Transferred to Hotel Dinner & Overnight stay at Jetwing St Andrew's Hotel, Nuwara Eliya - DLX Colonial

## D3 NUWARA ELIYA-COLOMBO (BLD)

After breakfast proceed to Colombo.

En route visit Kitulgala, where the famous movie "Bridge Of the River Kwai"

**OPTIONAL (USD 15 P.P.) - \*White Water Rafting** - This thrilling adventure on the white water sections of the Kelani River is suitable for amateurs as well as professionals alike. During the river run you will experience the thrill of shooting rapids and the euphoria of making it through. The river's clear water is born in the heart of the peak wilderness reserve and tumbles through a rocky gorge just above Kithulgala. As the river widens, we pass the scenic location used for the film - "Bridge over the river Kwai" filmed in 1956-, which is also a great place to jump in for a refreshing swim. Continue to Colombo. commence city tour \*Colombo - a drive through the city taking you to the busy commercial areas as well as the tree-lined residential, Cinnamon Gardens. Visit Fort, the former British administrative center and military garrison, Sea Street - the Goldsmith's quarters in the heart of Pettah, the Bazaar area, where is also a Hindu Temple with elaborate stone carvings, and the Dutch Church of Wolfendhal dating back to 1749. Also visit the BMICH, see the replica of Avukana Buddha & the Independence Square. \*Shopping in Colombo.....visit \*ODEL Unlimited provides ample opportunity indulge, not only in shopping for designer wear apparel for the whole family, but also take taste buds on a voyage of discovery. Transferred to Hotel. Dinner & Overnight stay at Pegasus Reef Hotel, Colombo - 4\*

## D4 COLOMBO (BLD)

after breakfast shopping \*BAREFOOT discover yourself at Barefoot - Toys Bags Clothes Handloom Fabric Sarongs Sarees - Household Linen Art Photography Books Furniture Gallery Café: Lunch at a Restaurant. \*House of Fashion, a large fourstorey mall which has a wide variety of apparel, handbags, luggage and home decor at very reasonable prices. Their lingerie department is worth a visit. Soft clingy bits and pieces in vibrant shades of tangerine, violet and turquoise vie for attention with similar items in pale pastels shades mauves, baby pink and pale cream. Need to get yourself designer accessories? No, problem. Many of the malls have the latest creations from Louis Vuitton, Gucci, Longchamps and Prada to name just a few. Of course you have to pay more for the real thing, which is also available at selected stores, but if you don't mind a lookalike, some excellent options are available. Transferred to Hotel. Dinner & Overnight stay at Pegasus Reef Hotel, Colombo - 4\*

## D5 COLOMBO-AIRPORT (B)

Packed breakfast transferred to the airport for the flight back.

HOTEL	NO. OF PAX	SINGLE	TWIN / TRIPLE	CHILD WITH BED	CHILD NO BED
<b>SEPTEMBER 2010 - OCTOBER 2010</b>					
<b>4D3N SRI LANKA DELIGHT</b>	02-03	1664	1262	775	540
	04-06	1461	1059	659	459
<b>NOVEMBER 2010 - APRIL 2011</b>					
<b>4D3N SRI LANKA DELIGHT</b>	02-03	1940	1410	864	600
	04-06	1724	1194	740	513
<b>Peak Period Supplements : -</b>					
<b>Sigiriya Village Hotel, Sigiriya</b>					
15/12/10 - 15/01/11 - MYR 40 per person					
<b>Hotel Topaz, Kandy</b>					
21/12/10 - 05/01/11 - MYR 40 per person					
06/01/11 - 30/04/11 - MYR 20 per person					
<b>Jetwing St Andrew's Hotel &amp; Pegasus Reef Hotel</b>					
20/12/10 - 10/01/11 - MYR 40 per person per hotel					

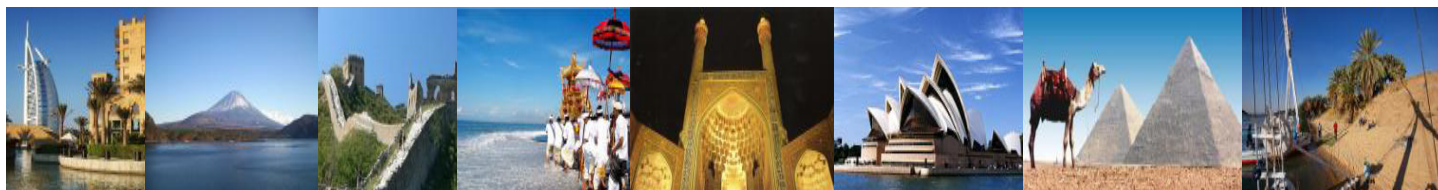
### INCLUDES:

- Accommodation as per the itinerary
- Meals as per itinerary
- Transportation in an a/c vehicle
- Services of an English-speaking chauffeur guide up to 6 pax & English / Chinese Speaking National Tour Guide for 7 & above Pax.
- Entrance fee for the tourist Sights mentioned in the itinerary

### EXCLUDES:

- Return International Airfare, Domestic Airfare
- Airport taxes and Fuel Surcharge
- Monument/camera fee @ monuments MYR 160
- Passport
- Any Visa fee if any
- Any item of personal nature such as table drinks, laundry, telephone calls ,mineral water
- Tips to motor-coach drivers and local city guides
- Items of personal nature
- Excess baggage
- Optional excursions
- Any peak season surcharge
- Any compulsory Gala Dinner
- Travel Insurance

Hotel	X'mas Eve Gala Dinner 24/12/2010	New Year Eve Gala Dinner 31/12/2010
Sigiriya Village Hotel, Sigiriya	235/- p.p.	235/- p.p.
Hotel Topaz, Kandy	180/- p.p.	180/- p.p.
Jetwing St Andrews, Nuwara Eliya	145/- p.p.	200/- p.p.
Pegasus Reef Hotel	145/- p.p.	180/- p.p.
Priyankara Hotel	130/- p.p.	145/- p.p.
Jetwing Tropical Villa	130/- p.p.	145/- p.p.



(KKKP:0233), B-0-5, Megan Avenue II, No.12 Jalan Yap Kwan Seng, 50450 Kuala Lumpur

T : 03 2164 1577 F : 03 2164 6307 E : [tours@kopetro.com.my](mailto:tours@kopetro.com.my) W : [www.kopetrotravel.com](http://www.kopetrotravel.com)