

SRI LANKA

5D4N SRI LANKA HERITAGE (TOUR CODE : I0504SLHGJW)



D1 KUL-COLOMBO AIRPORT-SIGIRIYA (L,D)

Arrive in Sri Lanka. Clients will be met and transferred to the World Heritage Site of Sigiriya. Lunch at Sigiriya Village Hotel & check-in. Afternoon climb *Sigiriya Rock Fortress - is home to the 5th Century "Fortress in the Sky" which is perhaps the most fantastic single wonder of the Island. It is also known as Lion Rock because of the huge lion that used to stand at the entrance to the fortress. Within its triple-moated defence the huge rock rises almost to a sheer height of 500ft. On its summit are the foundations of what was once a great and sumptuous palace and gardens complete with swimming pool. On one of the stairways the only known ancient work of Sinhala secular painting survived in the form of Frescoes of life sized damsels in all the freshness and delicacy of their original colour. Transferred to Hotel. Lunch, Dinner & Overnight stay at Sigiriya Village Hotel, Sigiriya - 3* Plus

D2 SIGIRIYA-MATALE-KANDY (B,L,D)

En route visit a *Spice Garden in Matale to see the different spices, which Sri Lanka is famous for. You will be introduced to different spices and shown how some of these spices are grown and processed. On arrival city tour of Kandy, including Upper Lake Drive, Market Square, Arts & Crafts Centre, Gem Museum. *Kandy - the hill capital, venue of the annual Perahera. The last stronghold of the Sinhala Kings was finally ceded to the British in 1815. Kandy is an example of the Buddhism's influence in Sri Lanka today. Temple's shrines and monasteries keeping alive Buddhist traditions are everywhere. Visit *Temple of the Sacred Tooth Relic - ever since 4th Century A.D, when the Buddha's Tooth was brought to Sri Lanka hidden from sacrilegious hands in an Orissan princess' hair, the Relic has grown in repute and holiness in Sri Lanka and throughout the Buddhist world. It is considered Sri Lanka's most prized possession. Witness a cultural show featuring various dance groups of Sri Lanka. Dinner & Overnight stay at Hotel Topaz, Kandy - 3*

D3 KANDY-COLOMBO (B,L,D)

After breakfast proceed to Colombo. Lunch at Raja Bojun Restaurant (Sri Lankan Buffet). In Colombo commence city tour *Colombo - a drive through the city taking you to the busy commercial areas as well as the tree-lined residential, Cinnamon Gardens. Visit Fort, the former British administrative center and military garrison, Sea Street - the Goldsmith's quarters in the heart of Pettah, the Bazaar area, where is also a Hindu Temple with elaborate stone carvings, and the Dutch Church of Wolfendhal dating back to 1749. Also visit the BMICH, see the replica of Avukana Buddha & the Independence Square. *Shopping in Colombo.....visit *ODEL Unlimited provides ample opportunity indulge, not only in shopping for designer wear apparel for the whole family, but also take taste buds on a voyage of discovery. Transferred to Hotel. Dinner & Overnight stay at Pegasus Reef Hotel, Colombo - 4*

D4 COLOMBO-BERUWELA-COLOMBO (B,L,D)

After breakfast excursion to Beruwela. *River Cruise Boat Ride in Madugagna. - Madu Ganga, a fascinating creation of Mother Nature is a beautiful inland lake on a river near Balapitiya with a large number of islands providing an idyllic setting for a well spent holiday. Lunch at Jetwing Tropical Villa. Transferred back to Colombo. *BAREFOOT discover yourself at Barefoot - Toys Bags Clothes Handloom Fabric Sarongs Sarees - Household Linen Art Photography Books Furniture Gallery Café: *House of Fashion, a large fourstorey mall which has a wide variety of apparel, handbags, luggage and home decor at very reasonable prices. Their lingerie department is worth a visit. Soft clingy bits and pieces in vibrant shades of tangerine, violet and turquoise vie for attention with similar items in pale pastels shades mauves, baby pink and pale cream. Need to get yourself designer accessories? No, problem. Many of the malls have the latest creations from Louis Vuitton, Gucci, Longchamps and Prada to name just a few. Of course you have to pay more for the real thing, which is also available at selected stores, but if you don't mind a lookalike, some excellent options are available. Transferred to Hotel. Dinner & Overnight stay at Pegasus Reef Hotel, Colombo - 4*

D5 COLOMBO-AIRPORT (B)

Packed breakfast transferred to the airport for the flight back.

HOTEL	NO. OF PAX	SINGLE	TWIN / TRIPLE	CHILD WITH BED	CHILD NO BED
SEPTEMBER 2010 - OCTOBER 2010					
4D3N SRI LANKA DELIGHT	02-03	1757	1355	831	578
	04-06	1554	1152	715	496
NOVEMBER 2010 - APRIL 2011					
4D3N SRI LANKA DELIGHT	02-03	2028	1520	930	644
	04-06	1813	1304	806	557
Peak Period Supplements					
Sigiriya Village Hotel, Sigiriya					
15/12/10 - 15/01/11 - MYR 40 per person					
Hotel Topaz, Kandy					
21/12/10 - 05/01/11 - MYR 40 per person					
06/01/11 - 30/04/11 - MYR 20 per person					
Jetwing St Andrew's Hotel & Pegasus Reef Hotel					
20/12/10 - 10/01/11 - MYR 40 per person per hotel					

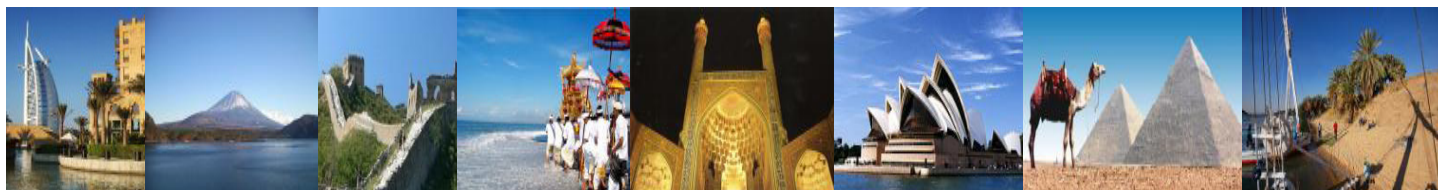
INCLUDES:

- Accommodation as per the itinerary
- Meals as per itinerary
- Transportation in an a/c vehicle
- Services of an English-speaking chauffeur guide up to 6 pax & English / Chinese Speaking National Tour Guide for 7 & above Pax.
- Entrance fee for the tourist Sights mentioned in the itinerary

EXCLUDES:

- Return International Airfare, Domestic Airfare
- Airport taxes and Fuel Surcharge
- Monument/camera fee @ monuments MYR 160
- Passport
- Any Visa fee if any
- Any item of personal nature such as table drinks, laundry, telephone calls, mineral water
- Tips to motor-coach drivers and local city guides
- Items of personal nature
- Excess baggage
- Optional excursions
- Any peak season surcharge
- Any compulsory Gala Dinner
- Travel Insurance

Hotel	X'mas Eve Gala Dinner 24/12/2010	New Year Eve Gala Dinner 31/12/2010
Sigiriya Village Hotel, Sigiriya	235/- p.p.	235/- p.p.
Hotel Topaz, Kandy	180/- p.p.	180/- p.p.
Jetwing St Andrews, Nuwara Eliya	145/- p.p.	200/- p.p.
Pegasus Reef Hotel	145/- p.p.	180/- p.p.
Priyankara Hotel	130/- p.p.	145/- p.p.
Jetwing Tropical Villa	130/- p.p.	145/- p.p.



(KKKP:0233), B-0-5, Megan Avenue II, No.12 Jalan Yap Kwan Seng, 50450 Kuala Lumpur
 T : 03 2164 1577 F : 03 2164 6307 E : tours@kopetro.com.my W : www.kopetrotravel.com