

NEW ZEALAND

8D7N NORTH & SOUTH ISLAND TOUR (TOUR CODE:10807GSN9H-8NSM34)

D1 Arrive Auckland

Arrive at Auckland. Met by GSN Pacific representative who will arrange you onto your shuttle bus transfer to your hotel.

D2 Auckland - Waitomo – Rotorua (B,L,D)

Travel south passing Hamilton, Te Awamutu, and Otorohanga, we arrive at Waitomo. Here we will embark on a boat and cruise into a grotto illuminated by countless of tiny glow worm suspended from the cave ceiling. Continue across Lake Karapiro, and Fitzgerald Glade, to the famous geothermal city of Rotorua for overnight stay. You will enjoy the Famous Maori concert and Hangi feast.

D3 Rotorua (B)

Today, experience the many sights that Rotorua has to offer. Take a stroll through Paradise Valley Springs to see native flora and fauna in natural surrounding and the huge trout fish that come to spring to breed. After which, is the performing sheep show at the Agrodome Farm. Visit the Whakarewarewa Thermal Reserve and learn about traditional Maori Arts And Crafts Institute

D4 Rotorua / Christchurch (B)

Transfer to Rotorua Domestic Airport for a domestic flight to the Christchurch. The Rotorua Airport has a levy of \$5 per person which must be paid at the airport. Upon arrival in Christchurch you will be met by the shuttle bus to transfer you to your Christchurch hotel.

D5 Christchurch - Mt. Cook – Queenstown (B)

Travel over the Canterbury Plains through Ashburton to depart from Christchurch. Journey across the Tussock Plains of Mackenzie Country to Lake Tekapo as we view the magnificent Church of Good Shepherd. When arrive Mount Cook National Park, We suggest a scenic flight (own expense) over some of New Zealand's finest alpine scenery. After departing from Mount Cook National Park, Travel through the rocky Kawarau Gorge then past Cromwell to climb up and over the Lindis Pass to Omarama. Travel to the picturesque holiday resort of Queenstown and view beautiful Lake Wakatipu.

D6 Queenstown - Milford Sound – Queenstown (B)

Depart for a spectacular journey to Milford Sound. View the Mirror Lakes and continue through the Eglinton Valley to the Homer Tunnel and on into the Cleddau Valley. Hop on to the cruise as we give you unforgettable experience while exploring the wonder of this majestic fiord. Return back to Queenstown.

D7 Queenstown – Christchurch (B)

Morning free for leisure. Travel through the Central Otago region and on to Twizel. Continue north following the shores of lake Pukaki before traveling across the Canterbury Plains to arrive at Christchurch.

D8 Christchurch / Overseas (B)

Transfer to Christchurch International Airport for your flight bound for home, taking with you unforgettable and pleasant memories of a wonderful of New Zealand.



PACKAGE PRICE MYR PER PERSON MIN 02 PAX VALID
01 OCT 2010 - 30 SEP 2011

HOTEL	SINGLE	TWIN / TRIPLE	CHILD WITH BED	CHILD NO BED
3*	MYR 5,095	MYR 3,972	MYR 3,001	MYR 2,030
4*	MYR 5,730	MYR 4,323	MYR 3,265	MYR 2,206

Prices subject to change with or without prior notice & subject to hotel & flight availability

INCLUDES:

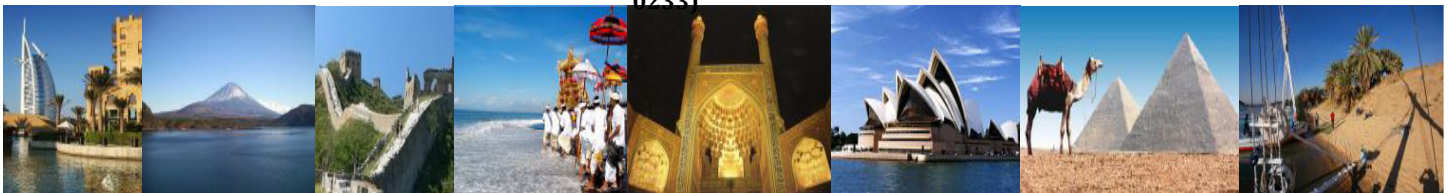
- ✓ Fare based in MYR Per Person with min 02 person
- ✓ Accommodation
- ✓ Daily breakfast
- ✓ 01 x lunch
- ✓ 01 x dinner
- ✓ Tours & sightseeing as per itinerary (SIC)
- ✓ Attraction admission as mentioned
- ✓ English speaking guide

EXCLUDES:

- X Return International Airfare, Domestic Airfare
- X Airport taxes and Fuel Surcharge
- X Passport & Visa fees
- X Laundry, phone calls, beverages, meals not detailed in the itinerary
- X Tips to motor-coach drivers and local city guides
- X Items of personal nature
- X Excess baggage
- X Optional excursions
- X Any peak season surcharge
- X Any compulsory Gala Dinner
- X Travel Insurance

HOTEL USED OR SIMILAR		
CITY	3*	4*
AKL	NEW PRESIDENT	SKY CITY
ROT	SUDIMA LAKE PLAZA HOTEL	PARK HERITAGE
CHC	CAMELOT SQUARE	GRAND CHANCELLOR
ZQN	SHERWOOD MANOR	RYDGES

Kopetro Travel & Tours Sdn Bhd (KKKP:
0233)



B-0-5, MEGAN AVENUE II, 12 JLN YAP KWAN SENG, 50450 KUALA LUMPUR

T : 03 2164 1577 F : 03 2164 6307 E : tours@kopetro.com.my W : www.kopetrotravel.com