

## NEW ZEALAND

### 8D7N NORTH & SOUTH ISLAND TOUR (TOUR CODE: I0807GSN9H-8NWS34)

#### D1 Arrive Auckland

Arrive at Auckland. Met by GSN Pacific representative who will arrange you onto your shuttle bus transfer to your hotel.

#### D2 Auckland - Waitomo – Rotorua (B)

Travel south passing Hamilton, Te Awamutu, and Otorohanga, we arrive at Waitomo. Here we will embark on a boat and cruise into a grotto illuminated by countless of tiny glow worm suspended from the cave ceiling. Continue across Lake Karapiro, and Fitzgerald Glade, to the famous geothermal city of Rotorua for overnight stay.

#### D3 Rotorua – Wellington (B)

Today, experience the many sights that Rotorua has to offer. Take a stroll through Paradise Valley Springs to see native flora and fauna in natural surrounding and the huge trout fish that come to spring to breed. After which, is the performing sheep show at the Agrodome Farm. Visit the Whakarewarewa Thermal Reserve and learn about traditional Maori Arts And Crafts Institute. In the afternoon we depart to Wellington, the capital city of New Zealand via Lake Taupo.

#### D4 Wellington- Inter Island Ferry – Picton – Christchurch (B)

After breakfast transfer to the Inter Islander ferry terminal to take the ferry crossing of the Cook Strait to the South Island. The ferry journey is 3hours and you will arrive at town port town of Picton. From here you will travel south to Christchurch via Kaikora the seaside town famous for Sperm Whales. Once you arrive in Christchurch you will proceed with a city tour.

#### D5 Christchurch - Mt. Cook – Queenstown (B)

Travel over the Canterbury Plains through Ashburton to depart from Christchurch. Journey across the Tussock Plains of Mackenzie Country to Lake Tekapo as we view the magnificent Church of Good Shepherd. When arrive Mount Cook National Park, We suggest a scenic flight (own expense) over some of New Zealand's finest alpine scenery. After departing from Mount Cook National Park, Travel through the rocky Kawarau Gorge then past Cromwell to climb up and over the Lindis Pass to Omarama. Travel to the picturesque holiday resort of Queenstown and view beautiful Lake Wakatipu.

#### D6 Queenstown (B)

Today is your free day! Choose one of the many optional activities available to you. For example going for the exciting jet boating, bungee jumping, relaxing garden tours, lake cruises, or helicopter rides over the surrounding mountains..

#### D7 Queenstown – Christchurch (B)

Morning free for leisure. Travel through the Central Otago region and on to Twizel. Continue north following the shores of lake Pukaki before traveling across the Canterbury Plains to arrive at Christchurch.

#### D8 Christchurch /air / Auckland Overseas (B)

Transfer to Christchurch Airport to catch your domestic flight to Auckland International Airport for your flight bound for home, taking with you unforgettable and pleasant memories of a wonderful of New Zealand



PACKAGE PRICE MYR PER PERSON MIN 02 PAX VALID 01 OCT 2010 - 30 SEP 2011				
HOTEL	SINGLE	TWIN / TRIPLE	CHILD WITH BED	CHILD NO BED
3*	MYR 5,040	MYR 3,945	MYR 2,981	MYR 2,017
4*	MYR 5,582	MYR 4,229	MYR 3,194	MYR 2,159

*Prices subject to change with or without prior notice & subject to hotel & flight availability*

#### INCLUDES:

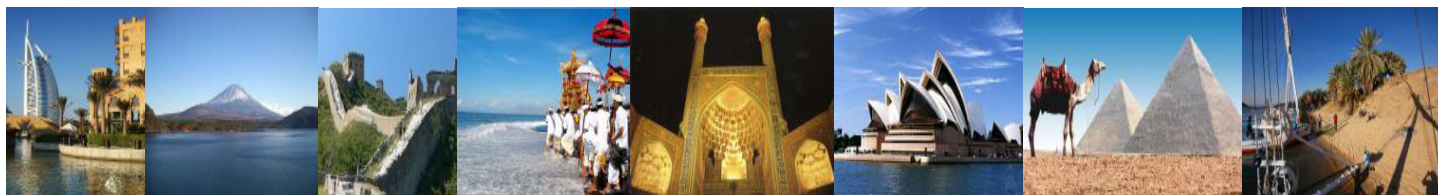
- √ Fare based in MYR Per Person with min 02 person
- √ Accommodation
- √ Daily breakfast
- √ 01 x lunch
- √ 01 x dinner
- √ Tours & sightseeing as per itinerary (SIC)
- √ Attraction admission as mentioned
- √ English speaking guide

#### EXCLUDES:

- X Return International Airfare, Domestic Airfare
- X Airport taxes and Fuel Surcharge
- X Passport & Visa fees
- X Laundry, phone calls, beverages, meals not detailed in the itinerary
- X Tips to motor-coach drivers and local city guides
- X Items of personal nature
- X Excess baggage
- X Optional excursions
- X Any peak season surcharge
- X Any compulsory Gala Dinner
- X Travel Insurance

HOTEL USED OR SIMILAR		
CITY	3*	4*
AKL	NEW PRESIDENT	SKY CITY
ROT	SUDIMA LAKE PLAZA HOTEL	PARK HERITAGE
CHC	CAMELOT SQUARE	GRAND CHANCELLOR
ZQN	SHERWOOD MANOR	RYDGES
WLG	BAY PLAZA	JAMES COOK GRAND CHANCELLOR

**Kopetro** Travel & Tours Sdn Bhd (KKKP: 0233)



B-0-5, MEGAN AVENUE II, 12 JLN YAP KWAN SENG, 50450 KUALA LUMPUR

T : 03 2164 1577 F : 03 2164 6307 E : [tours@kopetro.com.my](mailto:tours@kopetro.com.my) W : [www.kopetrotravel.com](http://www.kopetrotravel.com)