

NEW ZEALAND

7D6N SOUTH ISLAND & WEST COAST TOUR (TOUR CODE:I0706GSN9H-7SMW34)



D1 Arrive Christchurch (B)

Upon arrival in Christchurch you will be met by the shuttle bus to transfer you to your Christchurch hotel.

D2 Christchurch -Mt. Cook - Queenstown (B)

Travel over the Canterbury Plains through Ashburton to depart from Christchurch. Journey across the Tussock Plains of Mackenzie Country to Lake Tekapo as we view the magnificent Church of Good Shepherd. When arrive Mount Cook National Park, We suggest a scenic flight (own expense) over some of New Zealand's finest alpine scenery. After departing from Mount Cook National Park, Travel through the rocky Kawarau Gorge then past Cromwell to climb up and over the Lindis Pass to Omarama. Travel to the picturesque holiday resort of Queenstown and view beautiful Lake Wakatipu.

D3 Queenstown - Milford Sound - Queenstown (B)

Depart for a spectacular journey to Milford Sound. View the Mirror Lakes and continue through the Eglinton Valley to the Homer Tunnel and on into the Cleddau Valley. Hop on to the cruise as we give you unforgettable experience while exploring the wonder of this majestic fiord. Return back to Queenstown.

D4 Queenstown (B)

Today is your free day! Choose one of the many optional activities available to you. For example going for the exciting jet boating, bungee jumping, relaxing garden tours, lake cruises, or helicopter rides over the surrounding mountains.

D5 Queenstown-FoxGlacier (B)

Leave Queenstown and travel onwards to the township of Fox Glacier. Stopover at the pretty historic gold mining settlement of Arrowtown and the famous 'fruit town' of Cromwell. Fox Glacier - a 14 km long tongue of ice that descends to 250 meters above sea level, making a striking contrast with the surrounding thick bush, will captivate you.

D6 Fox Glacier - Greymouth - TranzAlpine Train-Christchurch (B)

Proceed to Greymouth while visiting to the town of Hokitika to view some of the local specialty high-quality arts and crafts which includes greenstones products. Journey from Greymouth on the spectacular scenic TranzAlpine train ride that travels through the mountainous and spectacular Arthur's Pass. Arrival in Christchurch you will be transferred by shuttle bus to your Christchurch hotel.

D7 Christchurch / Overseas (B)

Transfer to Christchurch International Airport for your flight bound for home, taking with you unforgettable and pleasant memories of a wonderful of New Zealand.

PACKAGE PRICE MYR PER PERSON MIN 02 PAX VALID
01 OCT 2010 - 30 SEP 2011

HOTEL	SINGLE	TWIN / TRIPLE	CHILD WITH BED	CHILD NO BED
3*	MYR 4,499	MYR 3,485	MYR 2,636	MY 1,787
4*	MYR 5,000	MYR 3,769	MYR 2,849	MY 1,929

Prices subject to change with or without prior notice & subject to hotel & flight availability

INCLUDES:

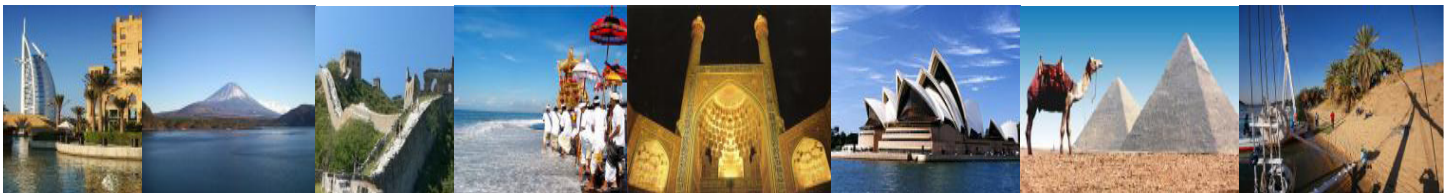
- √ Fare based in MYR Per Person with min 02 person
- √ Accommodation
- √ Daily breakfast
- √ Tours & sightseeing as per itinerary (SIC)
- √ English speaking guide

EXCLUDES:

- X Return International Airfare, Domestic Airfare
- X Airport taxes and Fuel Surcharge
- X Passport & Visa fees
- X Laundry, phone calls, beverages, meals not detailed in the itinerary
- X Tips to motor-coach drivers and local city guides
- X Items of personal nature
- X Excess baggage
- X Optional excursions
- X Any peak season surcharge
- X Any compulsory Gala Dinner
- X Travel Insurance

HOTEL USED OR SIMILAR		
CITY	3*	4*
CHC	CAMELOT CATHEDRAL	GRAND CHANCELLOR
ZQN	SHERWOOD MANOR	RYDGES
FOX	GLACIER COUNTRY	FRANZ JOSEF

Kopetro Travel & Tours Sdn Bhd (KKKP: 0233)



B-0-5,MEGAN AVENUE II, 12 JLN YAP KWAN SENG, 50450 KUALA LUMPUR

T : 03 2164 1577 F : 03 2164 6307 E : tours@kopetro.com.my W : www.kopetrotravel.com