

NEW ZEALAND

4D3N NORTH ISLAND TOUR (TOUR CODE:I0403GSN9H-4N34)

D1 Arrive Auckland

Arrive at Auckland. Met by GSN Pacific representative who will arrange you onto your shuttle bus transfer to your hotel.

D2 Auckland - Waitomo – Rotorua (B)

Travel south passing Hamilton, Te Awamutu, and Otorohanga, we arrive at Waitomo. Here we will embark on a boat and cruise into a grotto illuminated by countless of tiny glow worm suspended from the cave ceiling. Continue across Lake Karapiro, and Fitzgerald Glade, to the famous geothermal city of Rotorua for overnight stay.

D3 Rotorua – Auckland (B)

Today, experience the many sights that Rotorua has to offer. Take a stroll through Paradise Valley Springs to see native flora and fauna in natural surrounding and the huge trout fish that come to spring to breed. After which, is the performing sheep show at the Agrodome Farm. Visit the Whakarewarewa Thermal Reserve and learn about traditional Maori Arts And Crafts Institute. In the afternoon travel north back to the "The City of Sails" Auckland. At night, how about trying your luck in the Sky City Casino?

D4 Auckland / Overseas (B)

Transfer to Auckland International Airport for your flight bound for home, taking with you unforgettable and pleasant memories of a wonderful of New Zealand.



PACKAGE PRICE MYR PER PERSON MIN 02 PAX VALID
01 OCT 2010 - 30 SEP 2011

HOTEL	SINGLE	TWIN / TRIPLE	CHILD WITH BED	CHILD NO BED
3*	MYR 2,470	MYR 1,942	MYR 1,479	MYR 1,015
4*	MYR 2,768	MYR 2,105	MYR 1,601	MYR 1,097

Prices subject to change with or without prior notice & subject to hotel & flight availability

INCLUDES:

- √ Fare based in MYR Per Person with min 02 person
- √ Accommodation
- √ Daily breakfast
- √ 01 x lunch
- √ 01 x dinner
- √ Tours & sightseeing as per itinerary (SIC)
- √ Attraction admission as mentioned
- √ English speaking guide

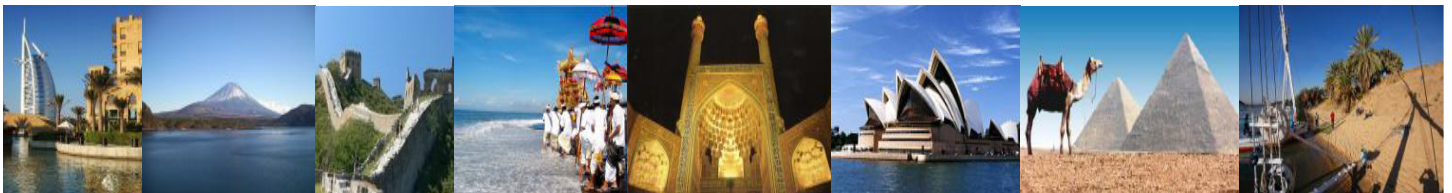
EXCLUDES:

- X Return International Airfare, Domestic Airfare
- X Airport taxes and Fuel Surcharge
- X Passport & Visa fees
- X Laundry, phone calls, beverages, meals not detailed in the itinerary
- X Tips to motor-coach drivers and local city guides
- X Items of personal nature
- X Excess baggage
- X Optional excursions
- X Any peak season surcharge
- X Any compulsory Gala Dinner
- X Travel Insurance

HOTEL USED OR SIMILAR

CITY	3*	4*
AKL	NEW PRESIDENT	SKY CITY
ROT	SUDIMA LAKE PLAZA HOTEL	PARK HERITAGE

Kopetro Travel & Tours Sdn Bhd (KKKP: 0233)



B-0-5, MEGAN AVENUE II, 12 JLN YAP KWAN SENG, 50450 KUALA LUMPUR

T : 03 2164 1577 F : 03 2164 6307 E : tours@kopetro.com.my W : www.kopetrotravel.com