

## SURABAYA

### 4D3N BROMO TRETES SURABAYA TOUR (TOUR CODE:I0403BTSUBSH)

#### D1 SURABAYA – BROMO TOSARI (D)

Arrive in Surabaya Airport. Meet & greet with our tour guide. Transfer to Mt. Bromo. Check into Bromo Cottage Hotel (3\*) at Tosari area. Dinner at local restaurant or at Hotel.

#### D2 BROMO TOSARI – TRETES (BLD)

Early morning wake up 03.00 A.M (Coffee & tea provided by hotel). Depart to Mt. Penanjakan (2750 meter) by local transport (or 4 WD jeep) from hotel. Continue to View Point 1 the best place to see the sunrise. After that go down to the sand ocean then continue by horse back riding acrossing the sand ocean up to Mt. Bromo and still 250 steps to climb until you reach the rim of the crater of Mt.Bromo (2300 meter). After watching the beautiful sunrise and spectacular view surrounding Mt. Bromo return to your hotel & have breakfast. Check out from hotel then transfer Pandaan. Visit Taman Safari Indonesia, a wild life conservation park for endangered species. Lunch at local restaurant. Transfer to Tretes City at the mountain resort area. Visit Kakek Bodo Waterfall. Afterwards Check into Tretes View Hotel (3\*) or Tretes Raya Hotel (4\*) or Finna Cottage at Finna golf & Country Club Resort (5\*). Dinner at local restaurant.

#### D3 TRETES - SURABAYA (BLD)

In the morning you will be picked up by our tour guide then transfer to Surabaya City. Proceed with Surabaya Discovery Tour : Submarine Monument - a real KRI Pasopati 410 type Whiskey Class Russia Submarine used in 1952 by Indonesia Navy. Afterwards visit The house of Sampoerna – own by one of the biggest cigarette clove factory in Indonesia PT.HM Sampoerna. This buildings have a Dutch Colonial style built in 1858 and now become a museum and behind this building is a cigarette factory where we can see the processing of making cigarette clove by hand. Next visit Mosque & Tomb of Sunan Ampel (One of the member of Walisongo –nine moslem saints - who pioneer the spreading of moslem religion in Java in 13th Century). Last visit toTunjungan Plaza Shopping Mall. After that check into Ibis Rajawali Hotel (3\*) or Bisanta Hotel (3\*) or Sahid Hotel (3\*) or Novotel Hotel (4\*) or Mercure Hotel (4\*) or Java Paragon Hotel (4\*) or Plaza Surabaya Hotel (4\*) or Tunjungan Hotel (4\*) or Somerset Hotel or Sheraton Hotel or Hotel Bumi Surabaya (5\*) or Majapahit Hotel (5\*). Dinner at local restaurant.

#### D4 SURABAYA – TRANSFER OUT (B)

After breakfast free program until departure time you will be picked up by our tour guide then transfer to Surabaya airport.



PACKAGE PRICE IN MYR PER PERSON MIN OF 02 PERSON VALID 01 AUG - 31 DEC 10

HOTEL	N O O F P A X	SING LE	TWI N/ TRIP LE	CHIL D WITH BED	CHIL D NO BED
BROMO COTTAGE 3* + TRETES VIEW 3* + IBIS RAJAWALI 3*	02 -	1,702. 00	1,429. 00	1,079. 00	729.0 0
	04 -	1,297. 00	1,024. 00	775.0 0	527.0 0

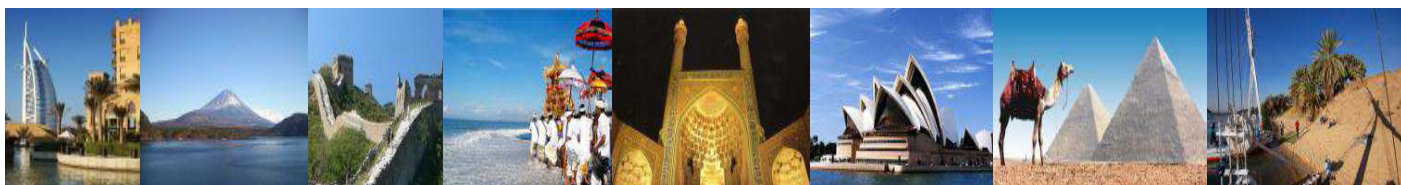
\*PRICE QUOTED SUBJECT TO CHANGE WITH OR WITHOUT PRIOR NOTICE

#### **INCLUDES:**

- Fare based in MYR Per Person with min 02 person
- Accommodation
- Hotel Daily Breakfast
- Meals as per itinerary
- Tours & sightseeing as per itinerary including entrance fees
- English speaking guide

#### **EXCLUDES:**

- Return International Airfare, Domestic Airfare
- Airport taxes and Fuel Surcharge
- Passport & Visa fees
- Laundry, phone calls, beverages, meals not detailed in itinerary
- Tips to motor-coach drivers and local city guides
- Items of personal nature
- Excess baggage
- Optional excursions
- Any peak season surcharge
- Any compulsory Gala Dinner
- Travel Insurance



KOPETRO TRAVEL & TOURS SDN BHD (KKKP:0233), 401, J(A), LEVEL 4, SURIA KLCC, 50088 KUALA LUMPUR

T : 03 2164 1577 F : 03 2164 6307 E : [tours@kopetro.com.my](mailto:tours@kopetro.com.my) W : [www.kopetrotravel.com](http://www.kopetrotravel.com)