

## SURABAYA

### 4D3N BROMO BATU SURABAYA TOUR (TOUR CODE:I0403BBSUBSH)

#### **D1 SURABAYA – BROMO TOSARI (D)**

Arrive in Surabaya Airport. Meet & greet with our tour guide. Transfer to Mt. Bromo. Check into Bromo Cottage Hotel (3\*) at Tosari area. Dinner at local restaurant or at Hotel.

#### **D2 BROMO TOSARI – BATU (BLD)**

Early morning wake up 03.00 A.M (Coffee & tea provided by hotel). Depart to Mt. Penanjakan (2750 meter) by local transport (or 4 WD jeep) from hotel. Continue to View Point 1 the best place to see the sunrise. After that go down to the sand ocean then continue by horse back riding acrossing the sand ocean up to Mt. Bromo and still 250 steps to climb until you reach the rim of the crater of Mt.Bromo (2300 meter). After watching the beautiful sunrise and spectacular view surrounding Mt. Bromo return to your hotel & have breakfast. Check out from hotel then transfer to Batu at mountain resort area. Visit East Java Amusement Park (JATIM PARK) a family recreation & theme park. Have lunch at local restaurant. Continue to Kusuma Agro Wisata The apple & orange plantation. Overnight at Kusuma Agro Wisata Hotel (3\*) or Purnama Hotel Batu (4\*) or Finna Cottages Hotel (5\*). Dinner at local restaurant.

#### **D3 BATU – SURABAYA – DISCOVERY TOURS (BLD)**

In the morning you will be picked up by our tour guide then transfer to Surabaya City. Proceed with Surabaya Discovery Tour : Submarine Monument - a real KRI Pasopati 410 type Whiskey Class Russia Submarine used in 1952 by Indonesia Navy, Kayoon Flower Garden Market which is located in the western bank of Kayoon River, Joko Dolog Statue - according to legend was erected in 1289 to honor King Kertanegara of the Singosari Dynasti. Have lunch at local restaurant. Next visit The house of Sampoerna - own by one of the biggest cigarette clove factory in Indonesia PT.HM Sampoerna. This buildings have a Dutch Colonial style built in 1858 and now become a museum and behind this building is a cigarette factory where we can see the processing of making cigarette clove by hand. Last visit to Surabaya Zoo where we can see the famous Komodo Dragon the worlds largest lizard. After that check into Ibis Rajawali Hotel (3\*) or Sahid Hotel (3\*) or Bisanta Hotel (3\*) or Novotel Hotel (4\*) or Surabaya Plaza (4\*) or Tunjungan Hotel (4\*) or Garden Palace Hotel (4\*) or Somerset Hotel (4\*) or Hyatt Regency Hotel (5\*). Dinner at local restaurant.

#### **D4 SURABAYA – TRANSFER OUT (B)**

After breakfast free program until departure time you will be picked up by our tour guide then transfer to Surabaya airport.



PACKAGE PRICE IN MYR PER PERSON MIN OF 02 PERSON VALID 01 AUG - 31 DEC 10

HOTEL	NO OF PAX	SINGLE	TWIN / TRIPL E	CHILD WITH BED	CHILD NO BED
BROMO COTTAGE 3* + KUSUMA AGRO WISATA 3*	02-03	1,800.00	1,492.00	1,127.00	761.00
	04-08	1,393.00	1,085.00	821.00	558.00

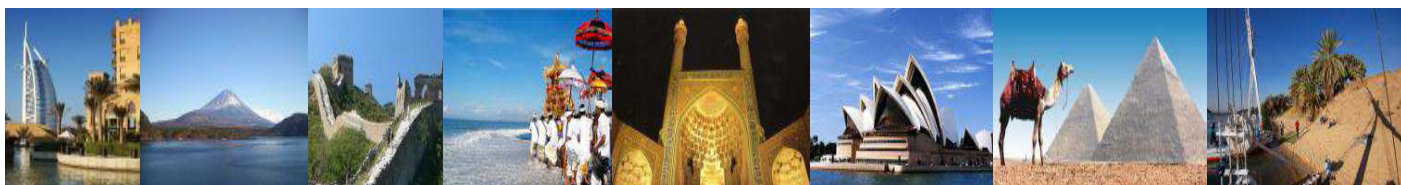
\*PRICE QUOTED SUBJECT TO CHANGE WITH OR WITHOUT PRIOR NOTICE

#### **INCLUDES:**

Fare based in MYR Per Person with min 02 person  
Accommodation  
Hotel Daily Breakfast  
Meals as per itinerary  
Tours & sightseeing as per itinerary including entrance fees  
English speaking guide

#### **EXCLUDES:**

Return International Airfare, Domestic Airfare  
Airport taxes and Fuel Surcharge  
Passport & Visa fees  
Laundry, phone calls, beverages, meals not detailed in itinerary  
Tips to motor-coach drivers and local city guides  
Items of personal nature  
Excess baggage  
Optional excursions  
Any peak season surcharge  
Any compulsory Gala Dinner  
Travel Insurance



KOPETRO TRAVEL & TOURS SDN BHD (KKKP:0233), 401, J(A), LEVEL 4, SURIA KLCC, 50088 KUALA LUMPUR

T : 03 2164 1577 F : 03 2164 6307 E : [tours@kopetro.com.my](mailto:tours@kopetro.com.my) W : [www.kopetrotravel.com](http://www.kopetrotravel.com)