

JOGJAKARTA

3D2N JOGJAKARTA SOLO PACKAGE (TOUR CODE:I0302JOGSOCSH)

D1 ARRIVAL ~ SOLO CITY TOUR [SOLO By Air Asia] [LD]

Arrival at Adisumarmo Airport Solo at 08.25 am by the airlines of Air Asia AK 996, meeting service and greeting accompanied by our professional Then visit to visiting the inside of the kingdom of Solo..the palace of Mangkunegaran, then see the centre of traditional batik market.Pasar Klewer, Bengawan Solo River and afternoon departure to Jogjakarta. it will take us an 1 hrs to to Jogjakarta. Lunch and Dinner will be served at local Rest.

D2 JOGJAKARTA TOURS (BLD)

After having b'fast depart to the Budhist temple Borobudur known as the one of seven wonders in the world, the continued to to the program of Jogja City tours by visiting Sultan palace, Taman Sari Water Castle, Bendi Museum, Roro Jonggrang Batik Factory and Silver Smith. At afternoon, continue back to Solo city for overnite, about 1 hours driving, arrivale hotel free program. Lunch and Dinner at Local restaurant.

D3 SOLO DEPARTURE (B)

After Breakfast at hotel, departure to the Adisumarmo for the next destination by the airlines of air Asia (departure time 08.55).



PACKAGE PRICE IN MYR PER PERSON MIN OF 02 PERSON VALID 01 AUG - 31 DEC 10

HOTEL	NO OF PAX	SINGLE	TWIN / TRIPLE	CHILD WITH BED	CHILD NO BED
BUDGET	02-03	868	724	550	377
	04-06	732	589	449	309
SILVER	02-03	959	771	586	400
	04-06	824	636	484	333
GOLD 1	02-03	1,006	795	603	412
	04-06	865	653	498	342
GOLD 2	02-03	1,068	836	634	433
	04-06	909	677	515	353
DIAMOND	02-03	1,328	842	639	436
	04-06	1,180	695	528	362

*PRICE QUOTED SUBJECT TO CHANGE WITH OR WITHOUT PRIOR NOTICE

INCLUDES:

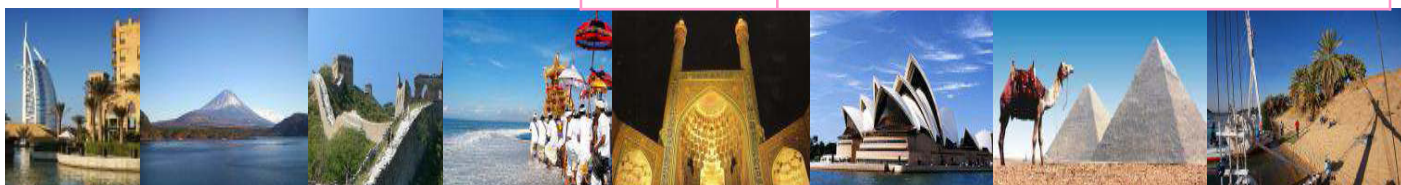
Fare based in MYR Per Person with min 02 person
Accommodation
Hotel Daily Breakfast
Meals as per itinerary
Tours & sightseeing as per itinerary including entrance fees
English speaking guide

EXCLUDES:

Return International Airfare, Domestic Airfare
Airport taxes and Fuel Surcharge
Passport & Visa fees
Laundry, phone calls, beverages, meals not detailed in itinerary
Tips to motor-coach drivers and local city guides
Items of personal nature
Excess baggage
Optional excursions
Any peak season surcharge
Any compulsory Gala Dinner
Travel Insurance

HOTEL USED OR SIMILAR

CITY	HOTEL
BUDGET	Istana Batik 2* Indah Palace 2*
SILVER	Grage Ramayana / Sahid Raya 3*
GOLD 1	Saphir / Best Western 4*
GOLD 2	Santika / Best Western 4*
DIAMOND	Melia Purosani / Lor Inn 5*



KOPETRO TRAVEL & TOURS SDN BHD (KKKP:0233), 401, J(A), LEVEL 4, SURIA KLCC, 50088 KUALA LUMPUR

T : 03 2164 1577 F : 03 2164 6307 E : tours@kopetro.com.my W : www.kopetrotravel.com