

SURABAYA

3D2N BROMO TRETES TOUR (TOUR CODE:I0302BTTSH)

D1 SURABAYA – BROMO TOSARI (D)

Arrive in Surabaya Airport. Meet & greet with our tour guide. Transfer to Mt. Bromo. Check into Bromo Cottage Hotel (3*) at Tosari area. Dinner at local restaurant or at Hotel.

D2 BROMO TOSARI – TRETES (BLD)

Early morning wake up 03.00 A.M (Coffee & tea provided by hotel). Depart to Mt. Penanjakan (2750 meter) by local transport (or 4 WD jeep) from hotel. Continue to View Point 1 the best place to see the sunrise. After that go down to the sand ocean then continue by horse back riding acrossing the sand ocean up to Mt. Bromo and still 250 steps to climb until you reach the rim of the crater of Mt.Bromo (2300 meter). After watching the beautiful sunrise and spectacular view surrounding Mt. Bromo return to your hotel & have breakfast. Check out from hotel then transfer to to Taman Safari, a wild life conservation park for endangered species such as Komodo Dragon, European Bison, Himalaya Black Bear, White Tiger, Rhinoceros etc which all live in open air. Visitors will explore this park by vehicle and see the animal in closed. Have lunch at local restaurant. Continue to Tretes mountain resort area. Visit Kakek Bodo Waterfall. Overnight at Tretes View Hotel (3*) or Tretes Raya Hotel (4*) or Finna Cottages Hotel (5*). Dinner at local restaurant.

D3 TRETES - SURABAYA – TRANSFER OUT (B)

After breakfast Free program until departure time you will be picked up by our tour guide then transfer to Surabaya airport.



PACKAGE PRICE IN MYR PER PERSON MIN OF 02 PERSON VALID 01 AUG - 31 DEC 10

HOTEL	NO OF PA X	SINGLE	TWIN / TRIPLE	CHILD WITH BED	CHILD NO BED
BROMO COTTAGE 3* + TRETES VIEW 3*	02-03	1,356.00	1,178.00	891.00	604.00
	04-08	997.00	819.00	622.00	425.00
BROMO COTTAGE 3* + TRETES RAYA 4*	02-03	1,415.00	1,208.00	913.00	619.00
	04-08	1,056.00	849.00	644.00	439.00

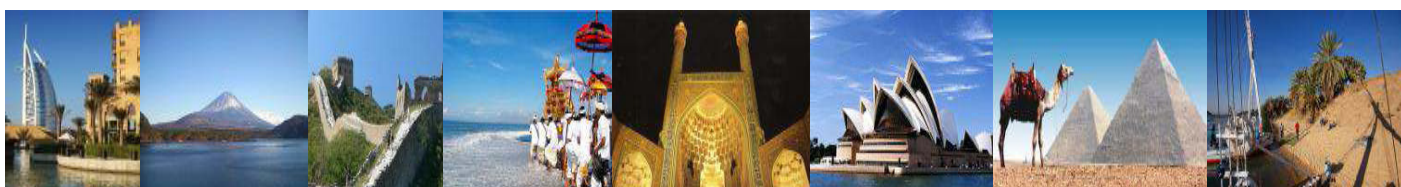
*PRICE QUOTED SUBJECT TO CHANGE WITH OR WITHOUT PRIOR NOTICE

INCLUDES:

Fare based in MYR Per Person with min 02 person
 Accommodation
 Hotel Daily Breakfast
 Meals as per itinerary
 Tours & sightseeing as per itinerary including entrance fees
 English speaking guide

EXCLUDES:

Return International Airfare, Domestic Airfare
 Airport taxes and Fuel Surcharge
 Passport & Visa fees
 Laundry, phone calls, beverages, meals not detailed in itinerary
 Tips to motor-coach drivers and local city guides
 Items of personal nature
 Excess baggage
 Optional excursions
 Any peak season surcharge
 Any compulsory Gala Dinner
 Travel Insurance



KOPETRO TRAVEL & TOURS SDN BHD (KKKP:0233), 401, J(A), LEVEL 4, SURIA KLCC, 50088 KUALA LUMPUR

T : 03 2164 1577 F : 03 2164 6307 E : tours@kopetro.com.my W : www.kopetrotravel.com