

SURABAYA

2D1N BROMO SUNRISE TOUR (TOSARI VILLAGE) (TOUR CODE:I0201BSTTVSH)

D1 SURABAYA – BROMO TOSARI (D)

Arrive in Surabaya Airport. Meet & greet with our tour guide. Transfer to Mt. Bromo. Check In to Bromo Cottage Hotel (3*) at Tosari area. Dinner at local restaurant or at Hotel.

D2 BROMO TOSARI – SURABAYA – TRANSFER OUT (B)

Early morning wake up 03.00 A.M (Coffee & tea provided by hotel). Depart to Mt. Penanjakan (2750 meter) by local transport (or 4 WD jeep) from hotel. Continue to View Point 1 the best place to see the sunrise. After that go down to the sand ocean then continue by horse back riding acrossing the sand ocean up to Mt. Bromo and still 250 steps to climb until you reach the rim of the crater of Mt.Bromo (2300 meter). After watching the beautiful sunrise and spectacular view surrounding Mt. Bromo return to your hotel & have breakfast. Check out from hotel then transfer to Surabaya airport.



PACKAGE PRICE IN MYR PER PERSON MIN OF 02 PERSON VALID 01 AUG - 31 DEC 10

HOTEL	NO OF PAX	SINGLE	TWIN / TRIPLE	CHILD WITH BED	CHILD NO BED
LAVA VIEW LODGE 3*	02-03	970.00	856.00	649.00	443.00
	04-08	692.00	578.00	441.00	304.00

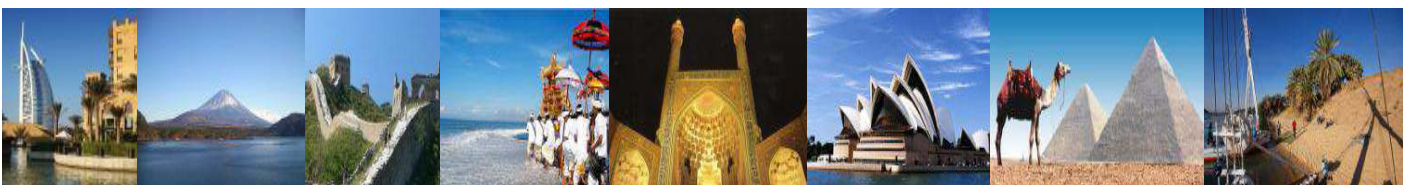
*PRICE QUOTED SUBJECT TO CHANGE WITH OR WITHOUT PRIOR NOTICE

INCLUDES:

- Fare based in MYR Per Person with min 02 person
- Accommodation
- Hotel Daily Breakfast
- Meals as per itinerary
- Tours & sightseeing as per itinerary including entrance fees
- English speaking guide

EXCLUDES:

- Return International Airfare, Domestic Airfare
- Airport taxes and Fuel Surcharge
- Passport & Visa fees
- Laundry, phone calls, beverages, meals not detailed in itinerary
- Tips to motor-coach drivers and local city guides
- Items of personal nature
- Excess baggage
- Optional excursions
- Any peak season surcharge
- Any compulsory Gala Dinner
- Travel Insurance



KOPETRO TRAVEL & TOURS SDN BHD (KKKP:0233), 401, J(A), LEVEL 4, SURIA KLCC, 50088 KUALA LUMPUR

T : 03 2164 1577 F : 03 2164 6307 E : tours@kopetro.com.my W : www.kopetrotravel.com