

# INDIA

## 8D7N GOLDEN TRIANGLE SHIMLA (TOUR CODE : I0807GTTSHILP)



### D1 ARRIVE - DELHI (MOB)

Met upon arrival at Delhi Intl Airport and transfer to your Hotel..

### D2 DELHI - JAIPUR (BLD)

After breakfast at hotel, check-out of rooms and proceed with the sightseeing tour of New Delhi. Drive past India Gate (memorial to the Indian army soldiers who died in the World War I) the Rastrapati Bhawan (formerly the viceroy's residence) and the Parliament House and visit Qutab Minar. drive to Jaipur. After lunch, depart by surface for Jaipur. Upon arrival in Jaipur, check-in at your Hotel.Meals and overnight at hotel.

### D3 JAIPUR (BLD)

After breakfast at hotel, proceed with the sightseeing tour of Amer Fort situated atop the Amber hill with photo stop en route of the famous Hawa Mahal. Lunch at Hotel. Afternoon, proceed with the sightseeing tour of city, visiting the City Palace, the principal residence of the ruling family and is known for its stunning architecture. Part of it is now converted into a magnificent museum. Also visit Jantar Mantar, a stone observatory raised in the 18th century. Time permitting visit cottage industry specializing in hand-woven carpets & textiles. Witness how silk carpets are handmade. Dinner and overnight at Hotel.

### D4 JAIPUR - AGRA (BLD)

After early breakfast at Hotel, depart by surface for Agra, with stop en route at Bharatpur for lunch & visiting world Heritage monument of Fatehpur Sikri. Upon arrival in Agra, check-in at your Hotel. Meals and overnight at hotel.

### D5 AGRA - DELHI - KALKA (BLD)

After breakfast at hotel, proceed with the sightseeing tour of city, visiting Agra Fort built in 1569 on banks of river Yamuna, during the great Mughal era. After this visit TAJ MAHAL, one of the 7-wonders of the world. Later visit a cottage industry to witness skilled craftsmen doing fine marble inlay work. (Taj Mahal is closed on Fridays). After lunch at hotel, depart by surface for Delhi. Upon arrival in Delhi, proceed with dinner at local restaurant. Later in time transfer to Railway Station to board the Kalka-Howrah Express train departing at 2250 hours for Kalka. Overnight on board Train's 2nd AC sleeper berths.

### D6 ARRIVE KALKA - SHIMLA (BLD)

Arrive in at Kalka station at 0500 hours. Connect on own to board the Kalka-Shimla Shivalik Express (toy Train) departing at 0530 hours for Shimla. Arrive in Shimla at 1015 hours. Met upon arrival at Station in Shimla and transfer to your hotel. Afternoon proceed with the sightseeing tour of Shimla town mostly by walking as vehicles not allowed. Visit the main street of Shimla, Mall road is full of activity and with lot of interesting shops & eateries around it. Dinner and overnight at Hotel.

### D7 SHIMLA - KUFRI - SHIMLA (BLD)

After breakfast at hotel, proceed with the sightseeing tour of Kufri, a winter ski resort and during summer, there are pony and horse riding. Also visit the unique Himalayan Zoo. Afternoon at leisure. Meals and overnight at Hotel.

### D8 SHIMLA - DELHI & DEPART (BD)

After breakfast at hotel, in time transfer to Kalka Station to board Paschim Express departing for Delhi at 1020 hours. Arrive in Delhi at 1640 hours. Met upon arrival and transfer to local restaurant for dinner. After early dinner transfer to airport to board flight for onward destination.

### PACKAGE PRICE MYR PER PERSON VALID 22 OCT 2010 - 31 MAR 2011

HOTEL	No. of pax	SINGLE	TWIN / TRIPLE	CHILD NO BED
3*	02	3,697	2,782	1,436
	03	3,214	2,299	1,418
	04-06	3,287	2,372	1,406
4* STANDARD	02	4,633	3,392	1,740
	03	4,150	2,909	1,723
	04-06	4,223	2,982	1,711
4* SUPERIOR	02	4,688	3,532	1,812
	03	4,590	3,434	1,795
	04-06	4,278	3,121	1,783
5*	02	5,616	3,951	2,020
	03	5,132	3,468	2,002
	04-06	5,205	3,541	1,991

\*PRICE QUOTED SUBJECT TO BE CHANGED WITH OR WITHOUT PRIOR NOTICE

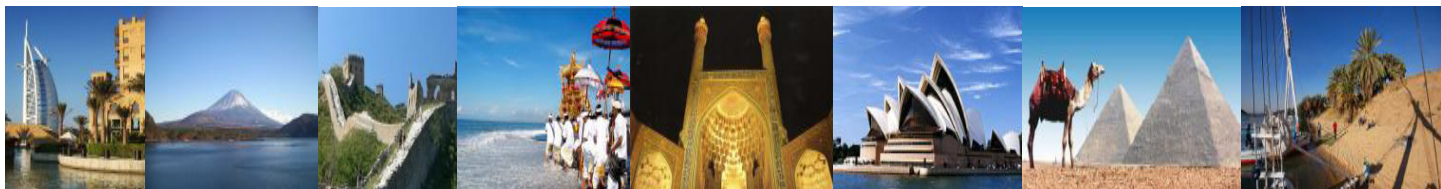
#### INCLUDES:

Fare based in MYR Per Person with min 02 person  
7 nights twin sharing accommodation  
Set menu buffet meals as per above  
Transportation using an air-cond vehicle as per above  
Service of a local English speaking guide in each city as per above programme for sightseeing's  
Jeep ride at Amer, Jaipur  
AC 2 tier sleeper berths from Delhi to Kalka. Normal seating from Kalka to Shimla & by AC seating from Kalka to Delhi  
Quote inclusive of 3.09% Government Sales Taxes

#### EXCLUDES:

Return International Airfare, Domestic Airfare Delhi - Srinagar - Delhi  
Airport taxes and Fuel Surcharge  
Any monument/camera fee MYR 190  
Passport  
Visa fees MYR 250  
Any item of personal nature such as table drinks, laundry, telephone calls, mineral water etc  
Tips to motor-coach drivers and local city guides  
Items of personal nature  
Excess baggage  
Optional excursions  
Any peak season surcharge  
Any compulsory Gala Dinner  
Travel Insurance

CITY	3*	4*STD	4*SUP	5*
DELHI	Grand Central	Avalon	Ramada	Le Meridien
Jaipur	Apex Intl	Park Inn	Mansingh Palace	Le Meridien
Agra	Pushp Villa	Howard	Mansingh Palace	Jaypee Palace
Shimla	Pine View	Eastbourne	Eastbourne	Eastbourne



KOPETRO TRAVEL & TOURS SDN BHD (KKKP:0233), 401, J(A), LEVEL 4, SURIA KLCC, 50088 KUALA LUMPUR

T : 03 2164 1577 F : 03 2164 6307 E : [tours@kopetro.com.my](mailto:tours@kopetro.com.my) W : [www.kopetrotravel.com](http://www.kopetrotravel.com)