

# 06D05N SWISS AT A GLANCE

Tour Code: SW6D5NTO

## D1 ARRIVAL ZURICH - INTERLAKEN

Arrive at Zurich Airport and you will be met upon arrival and transfer to Interlaken directly by private transfer. Arrive at your hotel and check in hotel (1400hrs). Rest of the day free at own leisure. Overnight at hotel.

## D2 INTERLAKEN – JUNGFRAU – TOP OF EUROPE

Breakfast at Hotel. Proceed to the starting point of this tour in centre of Interlaken. **Full Day Tour Jungfrau – (SIC Basis)**. An unforgettable Alpine tour to the majestic world of the Jungfrauoch – Top of Europe at 3'454m / 11'333ft. A scenic coach tour takes us to the magnificent mountain world of the Bernese Oberland. After a short interlude in Interlaken we reach Lauterbrunnen where we board the cogwheel train for the most interesting mountain train trip via Kleine Scheidegg at the foot of the famous Eiger North Face to Jungfrauoch – Europe's highest railway station. Enjoy the incredible world of eternal snow and ice. Visit the Ice Palace, experience the breathtaking panorama view from the Sphinx Observation Terrace overlooking countries. The down hill mountain trip takes us to Grindelwald where our coach awaits us for the return to Interlaken. Overnight at hotel.

**\*\*This tour does not operate on Monday and Tuesday, in case you are here on this day then we will adjust your itinerary by taking you to Lucerne first and then Interlaken\*\***

## D3 INTERLAKEN – LUCERNE

Breakfast at Hotel, you are free in the morning to enjoy this beautiful paradise on earth. Later check out hotel and you will be transferred to Lucerne by private transfer. Arrive and check in hotel (1400hrs). Rest of the day free to explore Lucerne or shop. Overnight at Hotel.

## D4 LUCERNE – MOUNT TITLIS

Breakfast at Hotel, proceed on your own to the Lucerne Tourist Office where you will board your coach for the **Full Day Tour to Mt. Titlis – (SIC Basis)**. An adventure excursion to the highest vantage point in Central Switzerland. A pleasant ride with our deluxe motor coach takes you to the mountain resort of Engelberg in Central Switzerland, where you will board the **aerial cableway** for a 45 minute journey from the green valley bottom to the high alpine glacier region at 3020m/1000ft which guarantees snow the whole year round. Enjoy a magnificent ride in the world's first ever revolving **'ROTAIR'** gondola, which offers a 360 degree panoramic view into the Alps. During the 2 hours stay on the mountain visit the Ice Grotto, experience the new **'Ice Flyer'** – chair lift ride over the glacier with fantastic views into crevasses and ice falls and enjoy a snow slide on the 'Fun Lift'. **(These activities are included in our tour)**. After the descent to Engelberg we board our coach for a drive to Lucerne, time at leisure (approx 1 hour). A short tour of Lucerne and then some time for shopping.

## D5 LUCERNE – ZURICH

Breakfast at Hotel, check out of hotel and you will be transferred by private transfer directly to your hotel in Zurich. Check in hotel (1400hrs). **(Leave your baggage at Bell Desk in case if you cannot check in hotel if room will only be possible after 1400hrs)**. Proceed on your own to Zurich Bus Station where you will take the **Combo Tour Zurich Trolley City Tour & Train trip up to Uetliberg 'Top of Zurich' – (SIC Basis)** at 1400hrs. Discover the sights of Zurich aboard the unique 'Classic Trolley'. In 2 hours we will show you our beautiful city and the comprehensive commentary by headset is available in 8 languages. Choose from English, French, German, Italian, Japanese, Portuguese, Russian and Spanish. After this tour you will enjoy a very pleasant train trip (independent) to Uetliberg – Top of Zurich. At 871m (2613ft) above sea level, Uetliberg towers over the roofs of Zurich. It offers magnificent views extending over the town and across the lake all the way to the Alps. From the top of the summit's 30m (100ft) viewing tower, which boosts your altitude to 900m (2700ft) a terrific 360 degree view awaits you. Only after seeing all of this can you really say you've been to Zurich!. This tour will take around 4 hours. Overnight hotel.

## D6 DEPARTURE ZURICH

Breakfast at Hotel, day free until departure transfer to Zurich airport or train station for your onward journey.

### DAILY DEPARTURE MYR PER PAX MIN 02 PAXS VALID UNTILL OCT 2011

HOTEL	SINGLE	TWIN	TRIPLE
3*	MYR 5,740	MYR 4,465	MYR 4,435
4*	MYR 6,550	MYR 4,890	MYR 4,860

**Prices subject to change with or without prior notice & subject to hotel & flight availability**

#### INCLUDES:

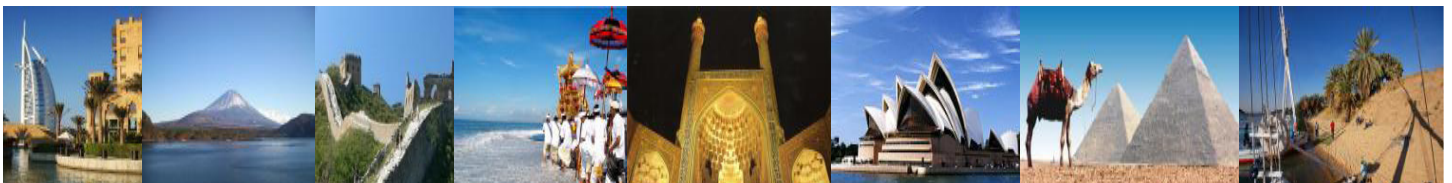
- √ Fare based in MYR Per Person with min 02 person
- √ 2 nights accommodation in Interlaken
- √ 2 nights accommodation in Lucerne
- √ 1 night accommodation in Zurich
- √ Breakfast daily
- √ Excursions to Jungfrau – Top of Europe and Mount Titlis
- √ All transfers on Private Basis
- √ Swiss Rail Travel in 2nd. class
- √ Government taxes and service charges
- √ Complimentary Travel Insurance
- √ Complimentary Kopetro back pack

#### EXCLUDES:

- X Return International Airfare, Domestic Airfare
- X Airport taxes and Fuel Surcharge
- X Passport & Visa fees
- X Laundry, phone calls, beverages, meals not detailed in the itinerary
- X Tips to motor-coach drivers and local city guides
- X Items of personal nature
- X Excess baggage
- X Optional excursions
- X Any peak season surcharge
- X Any compulsory Gala Dinner

### HOTEL USED OR SIMILAR

CITY	3* DIAMOND	4* DIAMOND
INTERLAKEN	Swiss Q City	Interlaken
LUCERNE	Best Western Rothaus	Central
ZURICH	Bristol	Swiss Q Wellnberg



KOPETRO TRAVEL & TOURS : B-0-5, MEGAN AVENUE 11, 12 JALAN YAP KWAN SENG, 50450 KUALA LUMPUR

T : 03 2164 1577 F : 03 2164 6307 E : tours@kopetrotravel.com W : www.kopetrotravel.com