

05D04N TOP OF SWISS

(Tour Code: :TR5D4NTSS)

All rates are quoted in MYR & Per Person Basis		
Category	3 Diamonds	4 Diamonds
Twin Sharing	RM 2700	RM 3300
Triple Sharing	RM 2655	RM 3255
Single Supplement	RM 465	RM675
Hotels Used		
City	3 Diamonds	4 Diamonds
Interlaken	City Oberland or similar	Interlaken Hotel or similar
Lucerne	Hotel Des Alpes or similar	Hotel Cascade or similar

Package Includes:

- 2 Nights Accommodation in Interlaken
- 2 Nights Accommodation in Lucerne
- Breakfast Daily
- Swiss Transfer Rail Ticket in 2nd class for 5 transfers

**FREE
EXCURSIONS
TO JUNGFRAU!!**

Day 01 Interlaken

Arrival in Interlaken by train 2nd class from the Swiss border or any Swiss airport. Make your own way to the hotel. Overnight in Hotel

Day 02 Interlaken – Jungfrau – Top of Europe

Breakfast at Hotel, Make your own way to Interlaken Train Station where you will take the train for your Excursion from Interlaken up to the Jungfrauoch , Top of Europe. From Interlaken Ost the train takes you via Lauterbrunnen ,(change of trains) and Wengen to the Kleine Scheidegg, at the foot of the famous Eiger North Wall. The Jungfrau Railway takes you up to the Jungfrauoch at 3454 m/11333 ft the highest railway station in Europe. Breathtaking views of the Aletsch Glacier, the longest glacier in the Alps. Overnight in Hotel

Day 03 Interlaken – Lucerne

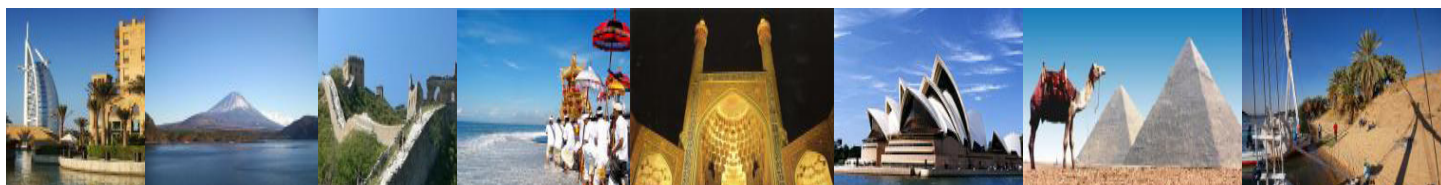
Breakfast at Hotel, today you will travel to Lucerne by train Rail trip by Brunig Express from Interlaken to Lucerne. Overnight at Hotel.

Day 04 Lucerne – Mount Pilatus

Breakfast at Hotel, today make your way to take a Lake Lucerne cruise from Lucerne to Alpnachstad, then up to the Pilatus 2132 m/7000 ft by the steepest cogwheel railway in the world (from May/June to November, during winter you take the bus from Lucerne to Kriens and further with a panoramic gondola from Kriens to Pilatus). Time at leisure. Overnight in Hotel.

Day 05 Lucerne - Zurich

Breakfast at Hotel, Return to Swiss border or airport or continue your stay in Switzerland at your own request.



KOPETRO TRAVEL & TOURS : B-0-5, MEGAN AVENUE II, 12 JALAN YAP KWAN SENG, 50450 KUALA LUMPUR

T : 03 2164 1577 F : 03 2164 6307 E : tours@kopetro.com.my W : www.kopetrotravel.com