

# 04D03N PARIS SHOPPING BONANZA

( Tour Code: 2T4DPS )

## DAY 1 ARRIVAL PARIS

Meet and greet upon arrival and transfer to your Hotel. Check into Hotel by 1400hrs. Rest of the day free at leisure. Overnight at Hotel.

## DAY 2 PARIS

Breakfast at Hotel. Visit Paris at your leisure. Tour on a Open Top Bus. Discover the main sites of Paris in an original and relaxed way. The round tour lasts approximately 2 hours and 15minutess with frequent daily departures. You may break your tour at any of our nine stops and continue later. You can stop at this stops and also shop. A multi-lingual system is available on all buses allowing you to hear commentaries in one of the 8 languages. Your ticket will be valid for 2 consecutive days. Overnight at Hotel.

## DAY 3 PARIS

Breakfast at Hotel. Visit Paris at your leisure. Tour on a Open Top Bus. Discover the main sites of Paris in an original and relaxed way. The round tour lasts approximately 2 hours and 15minutess with frequent daily departures. You may break your tour at any of our nine stops and continue later. You can stop at this stops and also shop. A multi-lingual system is available on all buses allowing you to hear commentaries in one of the 8 languages. Your ticket will be valid for 2 consecutive days. Overnight at Hotel.

## DAY 4 DEPARTURE PARIS

Breakfast at Hotel. Day free until departure transfer to Airport or Train Station

### DAILY DEPARTURE MYR PER PAX MIN 02 PAXS VALID UNTILL OCT 2011

HOTEL	SINGLE	TWIN	TRIPLE
3*	MYR 2,615	MYR 1,695	MYR 1,680
4*	MYR 3,265	MYR 2,040	MYR 2,020

*Prices subject to change with or without prior notice & subject to hotel & flight availability*

#### INCLUDES:

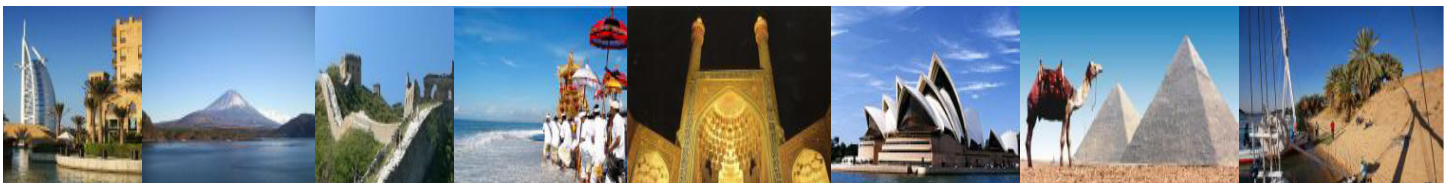
- √ Fare based in MYR Per Person with min 02 person
- √ 3 nights accommodation in London
- √ Continental breakfast daily
- √ Return airport transfers
- √ Sights and Sound Tour of London
- √ Government taxes and service charges
- √ Complimentary Travel Insurance
- √ Complimentary Kopetro back pack

#### EXCLUDES:

- X Return International Airfare, Domestic Airfare
- X Airport taxes and Fuel Surcharge
- X Passport & Visa fees
- X Laundry, phone calls, beverages, meals not detailed in the itinerary
- X Tips to motor-coach drivers and local city guides
- X Items of personal nature
- X Excess baggage
- X Optional excursions
- X Any peak season surcharge
- X Any compulsory Gala Dinner

### HOTEL USED OR SIMILAR

CITY	3* DIAMOND	4* DIAMOND
PARIS	Bellevue Hotel	Mercure Paris Tour Eiffel



KOPETRO TRAVEL & TOURS : B-0-5, MEGAN AVENUE 11, 12 JALAN YAP KWAN SENG, 50450 KUALA LUMPUR

T : 03 2164 1577 F : 03 2164 6307 E : tours@kopetrotravel.com W : [www.kopetrotravel.com](http://www.kopetrotravel.com)