

## GOLD COAST

**5D4N GOLD COAST 3 WORLDS ADVENTURE (TOUR CODE:I0504OOL-4N3W)**

### **D1 ARRIVAL GOLD COAST**

Arrive Gold Coast Airport, SIC Transfer to Gold Coast Hotel.

### **D2 GOLD COAST (B)**

Breakfast. Theme Park Admission – Movie World.

### **D3 GOLD COAST (B)**

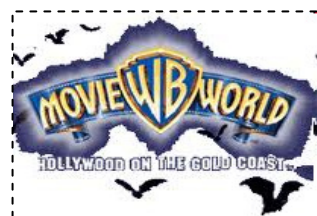
Breakfast. Theme Park Admission – Sea World.

### **D4 GOLD COAST (B)**

Breakfast. Theme Park Admission – Dream World.

### **D5 DEPARTURE GOLD COAST (B)**

Breakfast, SIC Transfer to Gold Coast Airport for departure.



HOTEL	SINGLE	TWIN / TRIPLE	CHILD WITH BED	CHILD NO BED	EXT NITE
ISLANDER RESORT	MYR 2,605	MYR 1,820	MYR 1,330	MYR 910	MYR 875
MANTRA LEGEND	MYR 2,865	MYR 1,945	MYR 1,605	MYR 925	MYR 1,005
HOLIDAY INN	MYR 3,040	MYR 2,035	MYR 1,765	MYR 735	MYR 1,090
SEA WORLD RESORT	MYR 3,040	MYR 2,125	MYR 1,000	MYR 1,000	MYR 1,090

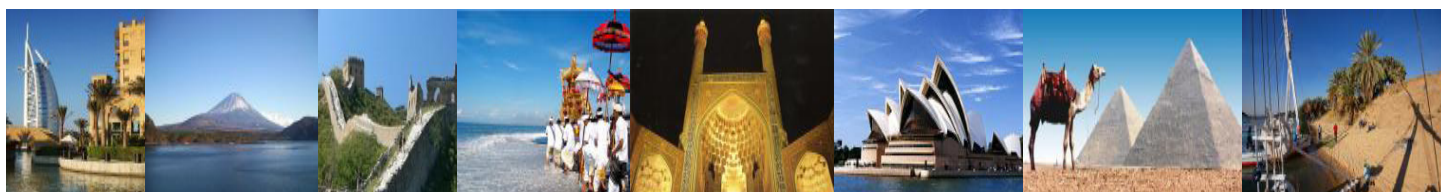
PACKAGE PRICE MYR PER PERSON (MIN 02 PAX PER DEPARTURE)  
\*PRICE QUOTED SUBJECT TO BE CHANGED WITH OR WITHOUT PRIOR NOTICE

### **INCLUDES:**

Fare based in MYR Per Person with min 02 person  
4 nights accommodation in Gold Coast  
Hotel daily breakfast  
Movie World Admission + Return transfer by SIC  
Sea World Admission + Return transfer by SIC  
Dream World Admission + Return transfer by SIC  
Return Gold Coast airport / Gold Coast Hotel by SIC

### **EXCLUDES:**

Return International Airfare, Domestic Airfare  
Airport taxes and Fuel Surcharge  
Passport & Visa fees  
Laundry, phone calls, beverages, meals not detailed in itinerary  
Tips to motor-coach drivers and local city guides  
Items of personal nature  
Excess baggage  
Optional excursions  
Any peak season surcharge  
Any compulsory Gala Dinner  
Travel Insurance



**KOPETRO TRAVEL & TOURS SDN BHD (KKKP:0233), B-0-5, MEGAN AVENUE II, JLN YAP KWAN SENG, 50450 KL**

**T : 03 2164 1577 F : 03 2164 6307 E : [tours@kopetro.com.my](mailto:tours@kopetro.com.my) W : [www.kopetrotravel.com](http://www.kopetrotravel.com)**